

## FS2000 – Installation IN029 Onwards

For support contact: [fs2000@aes-uk.com](mailto:fs2000@aes-uk.com)

### The FS2000 Distribution CD or Installation ZIP file

The CD/Zip contains the following:

- FS2000\_setup.exe                      FS2000 set-up program
- dk2wn3264.exe                      DESKey drivers set-up program
- Manuals                                  FS2000 documentation in PDF format
- DK2NetSvr                              DESNet software for network authorisation control

The FS2000 is a two-part setup. First is to install FS2000 and the second is to install the Deskey license control software. The second installation is not required if an existing FS2000 is being updated.

### What the Set-ups will do.

The **FS2000\_setup.exe** program will:

- Install FS2000 files in a folder of choice (default will be C:\Program Files(x86)\FS2000).
- Create a program group for the FS2000 program modules in the Windows start menu.
- Register (HKLM) the specified location of the FS2000 folder.

The **dk2win3264.exe** will install the DESKey drivers for FS2000's DESKey license control.

The **dnsve3264.exe** will install the DESNet software drivers for DESkey network server (optional).

The FS2000 folder it will have the following sub-folders.

System	FS2000 executables.
Examples	Validation Examples.
Props	Property Libraries (duplicates of those in the FS2000 User folder).
Manuals	Documentation in pdf format.

### FS2000 Folders

Apart from user model folders FS2000 uses two mandatory folders whose location is defined during setup:

- **FS2000 User Folder** – \*\*\*\*\* Requires FULL read & write access \*\*\*\*\*.
- **FS2000 System Folder** – Can be read only

The FS2000 User Folder can be located anywhere but at set-up the default will be C:\Program Files (x86)\FS2000. **The local user must have full read and write access to this folder.**

Following installation the FS2000 System folder will be a sub folder of the FS2000 User folder. The FS2000 User folder location is registered (HKLM). It will be registered (HKLU) with a specific user when FS2000 is first used.

A utility, FS\_User\_INI.exe (located in the FS2000\System folder) can be used to create/relocate and re-register the **FS2000 User Folder**. This can be used to change the location defined at set-up. This can also enable different local users each to have their specific FS2000 User folders.

**User Model Folders** - FS2000 requires fast read and write disk access to numerous model related data files. Therefore, for efficient operation, model folders should be located on a local hard drive. Locating model folders on the Desktop is not recommended. Network drives are recommended to be used for only for archive purposes. **Therefore, ensure that users have full access to a local drive folder** for model access.

## **FS2000 Documentation**

FS2000 has context sensitive help documentation (HTML Help files). Hit the F1 key to activate.

The user documentation for FS2000 is located on the CD in the Manual folder. The manuals are in PDF format. These pdf files are duplicates of the HTML Help files

FS2000.pdf is the document version of the Help file for the core module.

Documentation relating the DesNet server software is located on the CD in the DK2NetSvr folder.

## Software License Control

FS2000 uses a DESKey (DK2) USB dongle system to control the use of the program. This control can be local or networked using a host machine.

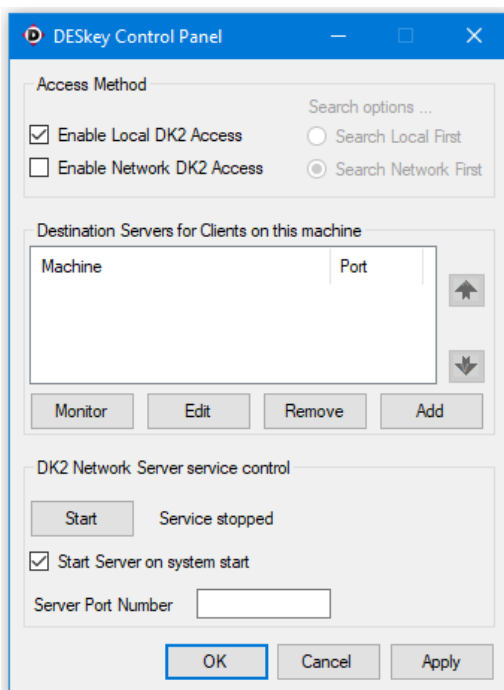
- On a FS2000 single license set-up, the DESKey is generally used in local mode with the dongle plugged into the machine running FS2000.
- On a network the DESKey dongle may be fitted to any machine (the host) on the network. The dongle can be used to authorise the running of FS2000 on a number of machines, subject to the concurrency user limit set by the dongle. The host machine has to run the DESNet server software.

## DESKey Drivers

All machines running FS2000 are required to have the DESKey drivers loaded. The DESKey driver installation is '**dk2wn3264.exe**'.



The DESKey icon for the DESKey Control Panel utility is added to the Windows Control Panel when the DESKey drivers are installed.



The DESKey configuration utility can be used to enable local and/or network access.

Note that for the initial setting, a prompt will appear (local or network) when the DK2 drivers are installed.

## DESNet Network Server

The host machine acting as the DESNet server requires the DESNet Network Server software to be installed and running,

The service is called 'DK2 Network Server'

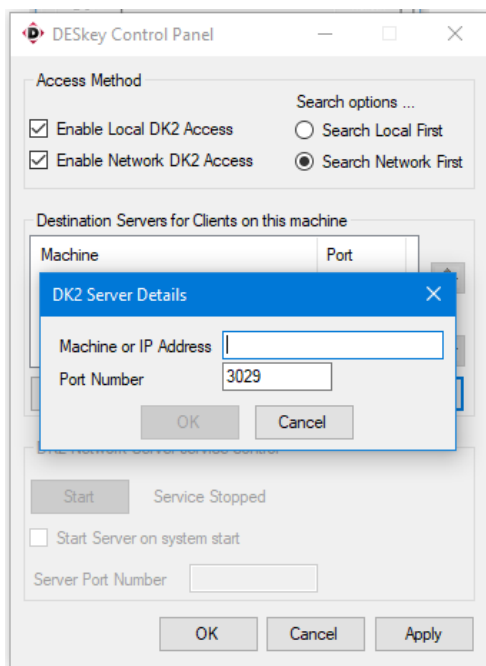
The DESNet service installation file is '**dnsvr3264.exe**' and is located in the CD's DK2NetSvr folder. The file **DNSvPm32.dll** must be present in the same folder as **dnsvr3264.exe** when this file executed.

DESNet manual is located in the distribution CD's DK2NetSvr folder.

FS2000 does not have to be installed on the machine running the DESNet Server, but can be.



The location of the DESNet server(s) has to be identified on the client m/c. This is done using the DESKey Control Panel utility.

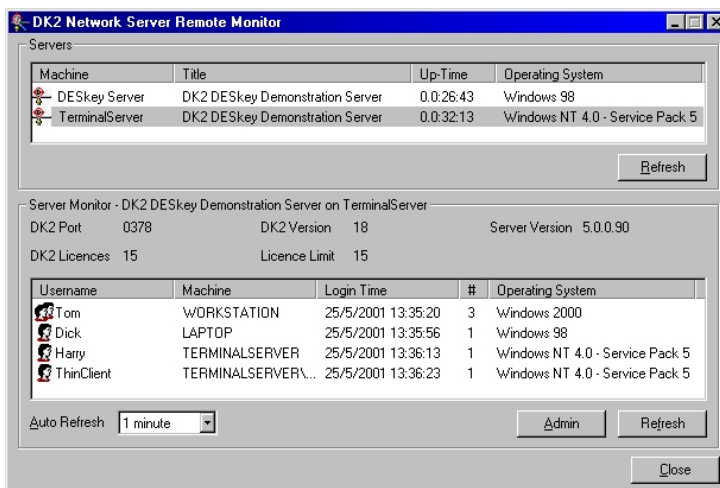


The **Add** button enables the location of the DESNet servers to be specified in the Destination Servers box.

A server **MUST** be specified if the DESNet server is being used.

More than one server can be identified. If a licence from the 1st server in the list, either because there are no licences available or the server is not running, the 2nd server in the list will be checked and so on.

## DESKey Network Server Monitor



This DESKey Network Server Monitor will be added to the Windows Start menu on the client. This allows the server to be administered without the need to access the machine running the software.

The FS2000 user is not required to enter or change any of the Server Monitor settings during normal FS2000 use.

Note: The initial password for the server software Admin is 'deskey'.

## DESNet Connection Monitor

When using FS2000 it is recommended that the connection monitor be activated and set to 5-10min.

The default setting is no monitoring. With this setting any user will always be logged as a user until FS2000 is correctly exited. If there is a crash and FS2000 is not correctly exited then the user still holds the licence. The monitor, if activated will cancel the license in such an event.

