

Server Usage

This chapter explains how to use the DK2 Network Server Software including use of the DK2 Network Server Remote Monitor to configure and administer the DK2 Network Server service.

Overview

The DK2 Network Server runs as a service on the machine to which a network compatible DK2 is attached, and provides the communications interface between the remote client applications and the DK2. This enables a single DK2 to service a network of workstations, which would otherwise require separate keys on each machine.

The default model for software licensing with the DK2 Network Server is done on a process basis. This is where every process accessing the DK2 Network Server will require a user licence. This means if multiple copies of protected software are run on any one machine then they will each require a user licence.

It is possible to license software in alternative ways, such as on a workstation basis where a single licence can be shared among any applications running on the same workstation or within the same Terminal Server session. If you have an alternative licensing requirement, please contact the Sales Department.

The 32 Bit DK2 Network Server Service

Once installed, the server service and client access to the server can be controlled via the DESkey control panel. The DESkey control panel can be accessed by opening the Windows Control Panel and double clicking the DESkey icon.



DESkey

Figure 2 - 1

The Networking page (Figure 2 - 2) can be used on the server machine to start and stop the DESnet Server Service and to specify which servers the client application should access for licensing.

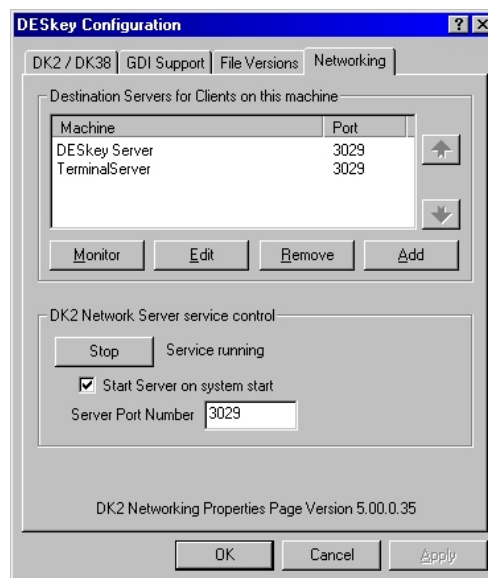


Figure 2 - 2

Destination Servers

A list of machines that have a DK2 installed on them can be added on this page. This list can contain a single entry to indicate a single DK2 Network Server or can contain multiple entries if multiple DK2 Network Servers exist on the network.

The list can be propagated by clicking the 'Add' button and either:

- Browsing for the machine
- Entering the network name
- Entering the network IP address

The order in which the entries are shown is also the order in which they are searched with the first item (top most) being searched first. The search order can be changed at any time by selecting an entry and clicking the up or down arrows to promote or demote the machine.

The 'Remove' button will remove the selected machine from the list. This will mean that it will not be checked when attempting to locate a licence and also the DK2 Network Server may not be monitored.

The 'Edit' button allows the TCP/IP port of the selected Server to be specified. The default port is 3029 but any other port can be chosen if necessary. This setting should not normally need to be changed unless network restrictions make the default port unusable.

NB: The same port as the destination server is using must be chosen otherwise protected software will be unable to login.

The 'Monitor' button will launch the remote monitoring tool, the DK2 Network Server Remote Monitor (Figure 2 - 3). This utility allows the server to be administered without needing access to the machine running the software. As the DK2 Network Server runs as a service and not an application, remote monitor must be used to view and control connected users and modify server settings.

DK2 Network Server Service Control

If a DK2 Network Server Service has been installed on this machine, the service can started and stopped here. This negates the need to start or stop the service from the service control manager.

An option to start the service as soon as Windows starts is also available. The default after installing the software is to automatically start the service. Under Windows 9x/ME the PC must be rebooted after an install to initially start the server. Under Windows NT/2000 it can be started automatically and there should be no need to reboot.

The DK2 Network Server Remote Monitor

The DK2 Network Server Remote Monitor can be used to monitor any of the servers listed in the Networking section of the DESkey Control Panel.

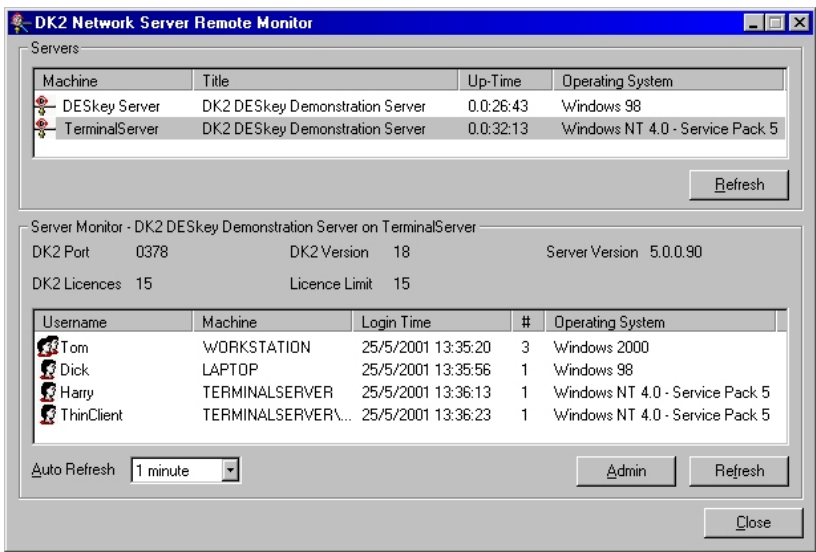


Figure 2 - 3

When launched, the monitor will query each machine listed in the control panel and retrieve information on any servers running. The basic information includes the parallel port I/O address of the DK2 being used, the version of the DK2 and of the server software and the DK2 licence information. Additionally, a list of users currently logged in will be displayed.

The icon associated with each user will be one of the following:



Indicates the client is accessing the server with a workstation license. The fourth column indicates the total number of active connections.



Indicates the client is accessing the server with a process license.

The two Refresh buttons control the refreshing of the two screens listing the servers and users of the selected server. The Auto Refresh option will control how often the user list is updated but the server list will require manually refreshing to update the list.

The 'Admin' button will launch the administration window (Figure 2 - 4) and allow server settings to be modified. The server password is required to administer the server. By default, this value is "deskey" but can be set to any value required from the administration window or can be set by the supplier of the software prior to installation. When upgrading a server installation (i.e. reinstalling software for a particular DK2),

previous settings, including the server administration password, will be maintained.

DK2 Server General Administration

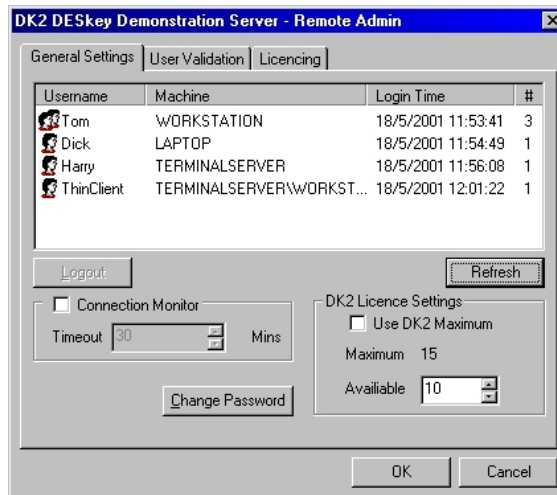


Figure 2 - 4

On the General page the following server properties can be modified:

Connection Monitor

This value specifies the maximum length of idle time the server will expect from any user. If the user has not accessed the server in this period they will be automatically logged off from the server without warning, even if the protected software is still running.

DK2 Licence Settings

This value allows a user definable limit to be placed on the number of available users licences in the DK2 Network Server. This limit can be configured to a maximum of the licence count in the DESkey or 255, whichever is less.

Logout

If a user is selected, the option to force their logout from the server is available. The user will not be warned when they are logged out from the server. This can be used in place of the connection monitor to be more selective when removing users.

Refresh

This will refresh the monitor window with the latest information from the server.

DK2 Server User Validation

The DK2 Server Monitor is also used to configure the User Validation of the DESkey Network Server. When used, only users entering the correct username and password will be granted access.

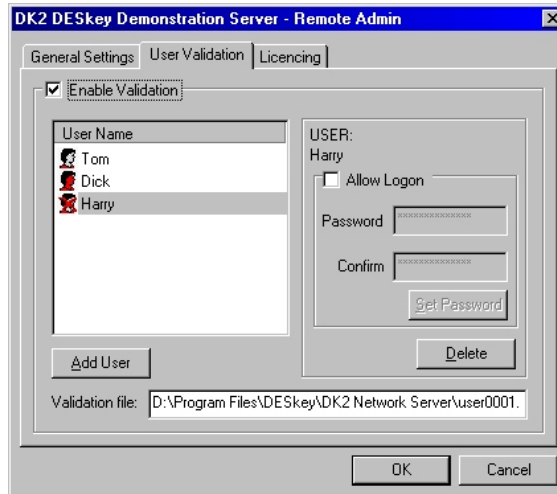


Figure 2 - 5

Once added, options allow users to be either disabled or deleted. A user can be disabled by unchecking the 'Allow Logon' box. A user can be deleted by selecting the 'Delete' button. Any changes made to the user validation options will not be applied to the server until the 'OK' button has been clicked. Disabling is different from deleting in that the user may be restored at a later date and any options will be retained.

The validation file is stored on the machine currently being monitored, (not necessarily the local machine.) Prior knowledge of the directory structure on the remote machine is required if the locations of the file is changed from the default directory.

The users login password can be changed at any time by entering the new password into both the 'Password' and 'Confirm' boxes and by clicking 'Set Password'.

If enabled, any user trying to access the server will be prompted to enter his or her username and password as shown in Figure 2 - 6.

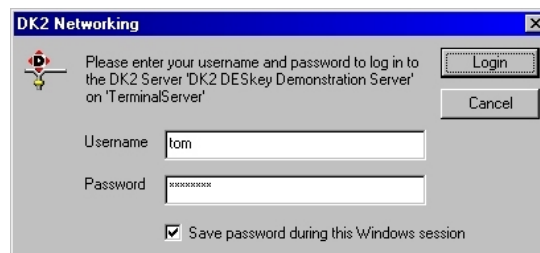


Figure 2 - 6

The "Save password during this Windows session" option will enable the username and password to be cached so that future attempts to log in to the DK2 Network Server, during the same Windows session, will not require the user to enter the username and password.

DK2 Server User Licenceing

The number of concurrent users that can access the DK2 Network Server is controlled by the licence count within the DESkey. The maximum limit of the DK2 Network Server is 255 users. If present, the DK2 Network Server software will ignore any extra licences over the 255 limit.

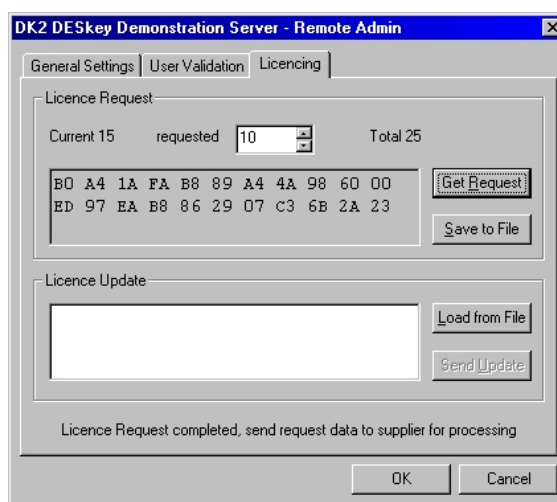


Figure 2 - 7

In order to update the licence count in the DESkey a licence request must be generated. This can be done using the Remote Admin tool by clicking the "Get Request" button. This will generate a request which can be used by the licence issue application.

Once the request has been processed, a licence update command will be sent which can be applied to the key using the same tool. Enter the licence update and click "Send Update". There should be no need to restart the server unless a problem is encountered during the update phase.

This process should not effect any currently logged in users as both request and update are designed to work whilst the server is in use.